



WALDO RETAIL LOCATION FOR LEASE

7420 Wornall Road, Kansas City, Missouri



Lease Rate: \$2,300/Month Modified Gross | 2,017 SF Space

DEMOGRAPHICS

	1 mile	3 miles	5 miles
Estimated Population	13,938	96,027	244,361
Avg. Household Income	\$150,931	\$159,906	\$125,440

- Rare Waldo retail availability
- Located next to Bobby Baker's Lounge
- Excellent visibility to Wornall Road
- Turn-key space for retail or office user



CLICK HERE TO VIEW MORE LISTING INFORMATION

For More Information Contact:

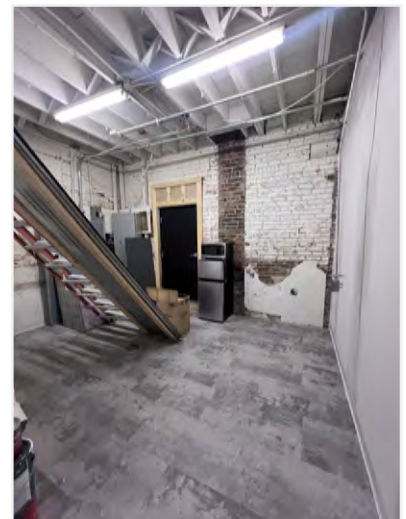
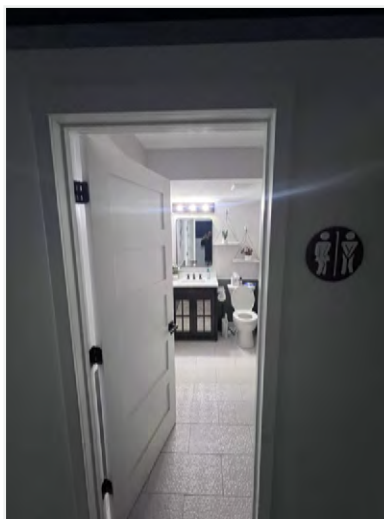
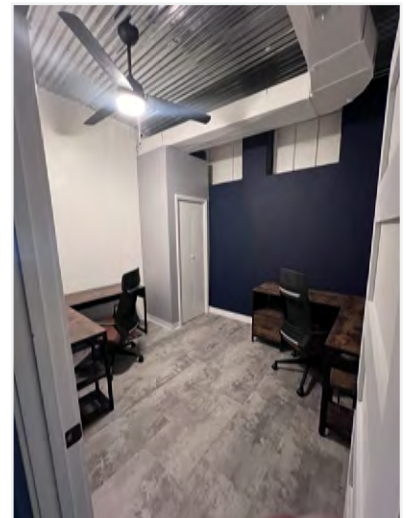
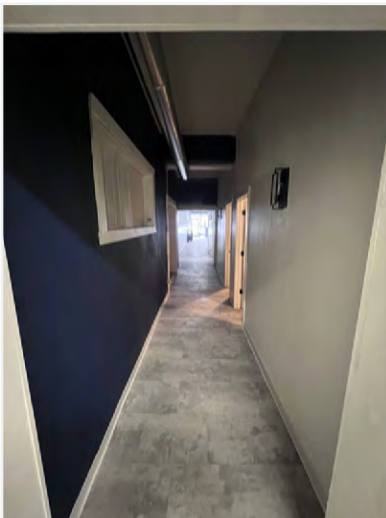
DANIEL BROCATO | 816.412.7303 | dbrocato@blockandco.com

PAUL MASSALI | 816.412.7409 | pmassali@blockandco.com

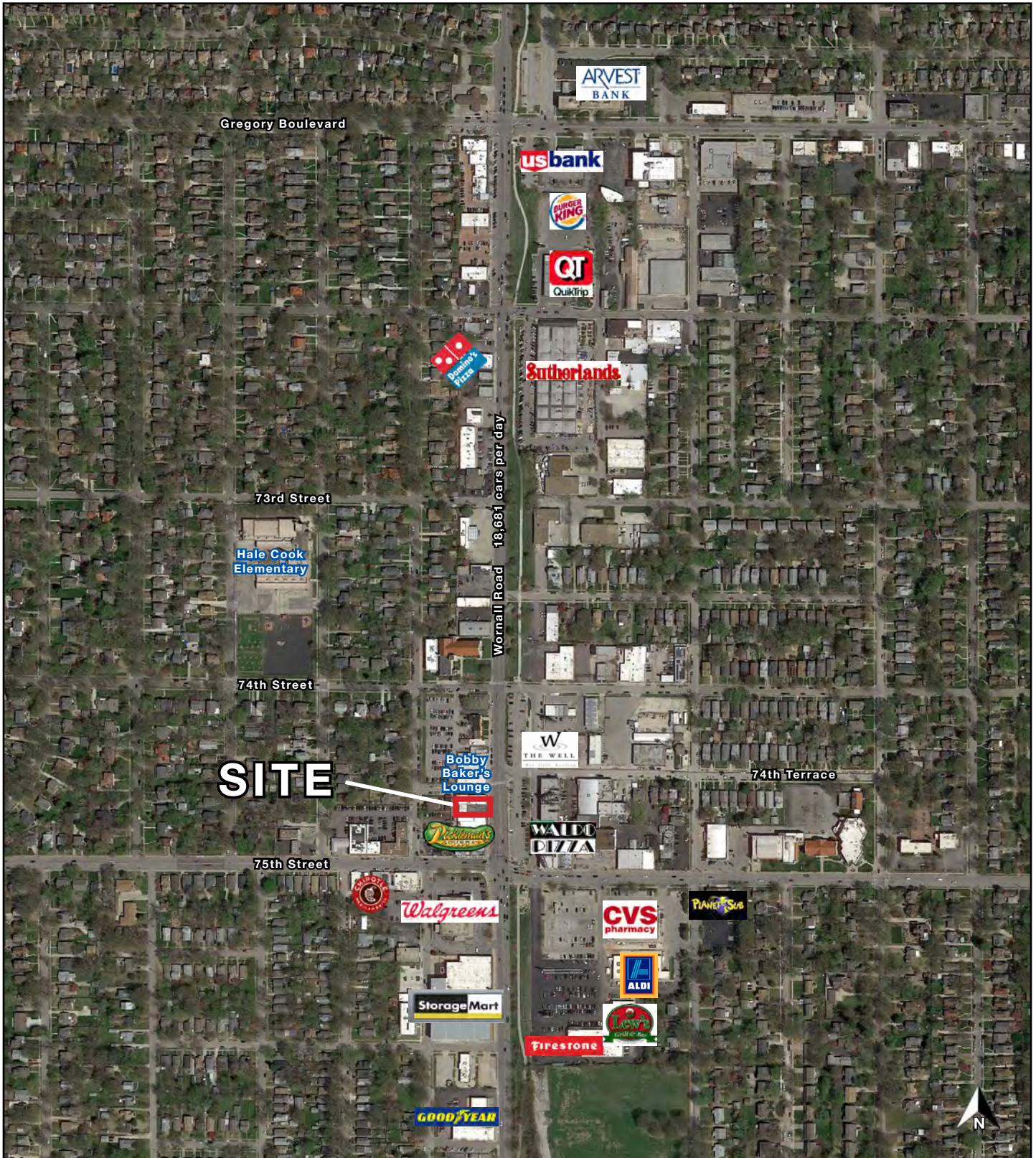
Exclusive Agent



INTERIOR PHOTOS

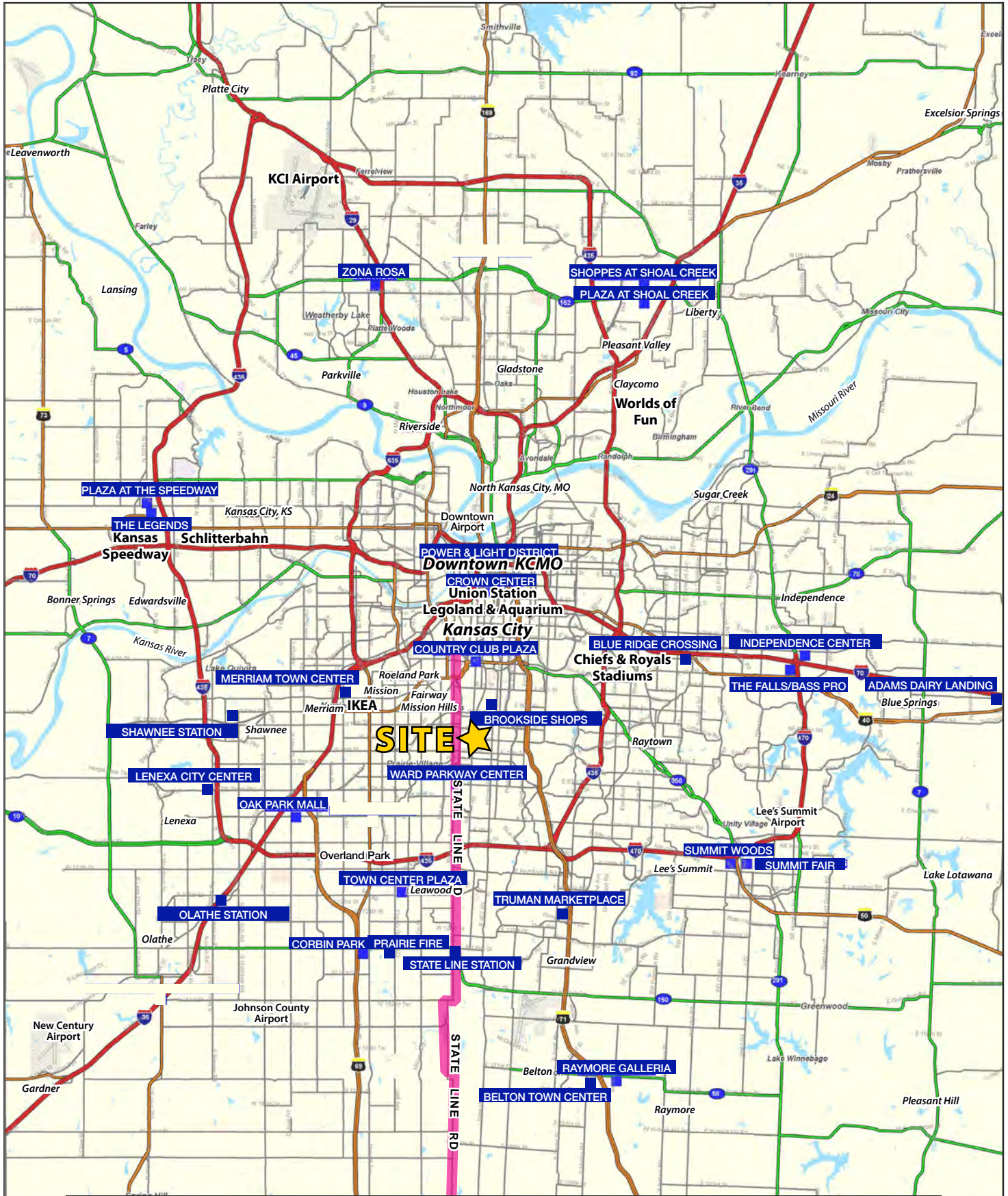


AERIAL



WALDO RETAIL LOCATION FOR LEASE

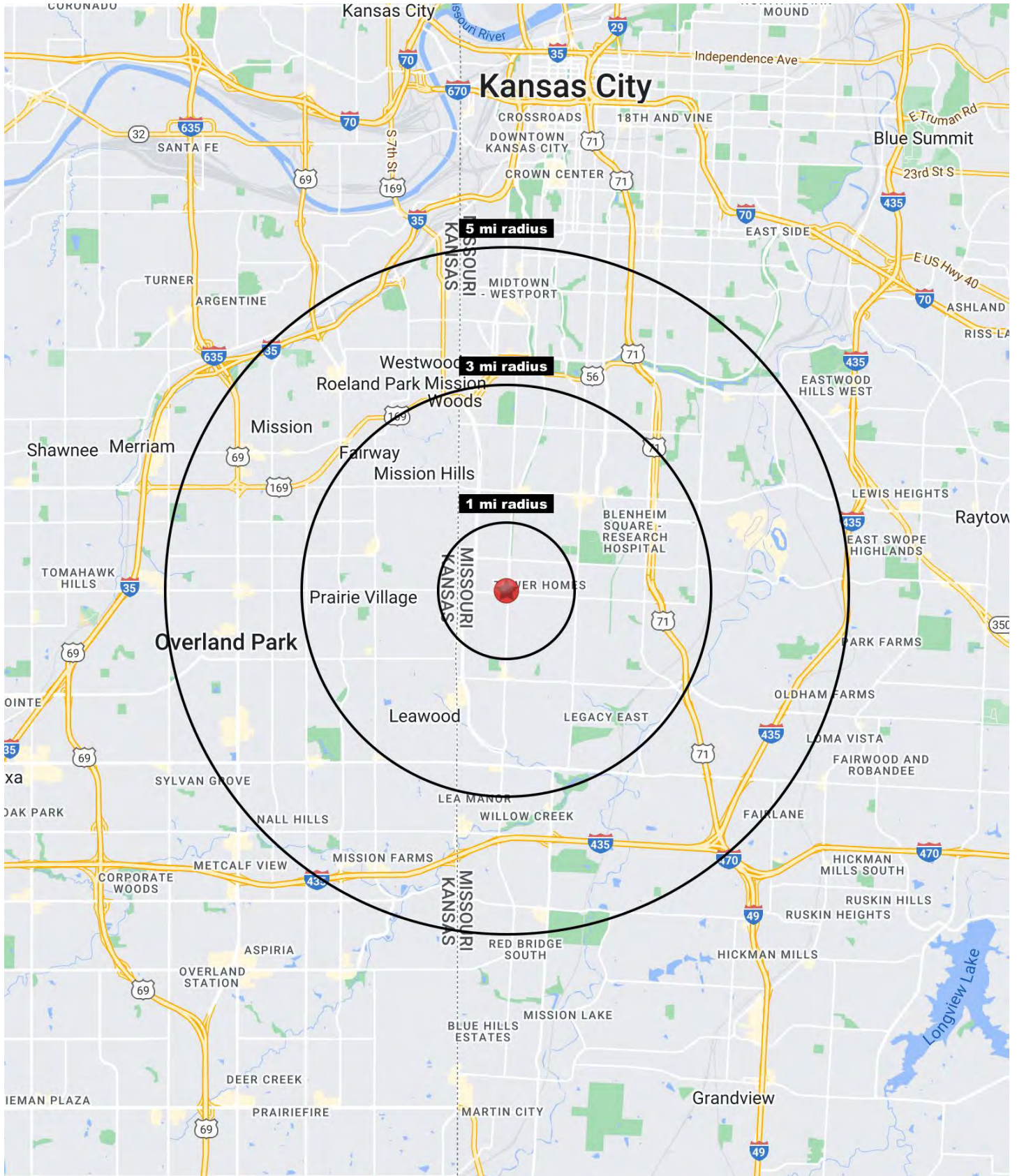
7420 Wornall Road, Kansas City, Missouri





WALDO RETAIL LOCATION FOR LEASE

7420 Wornall Road, Kansas City, Missouri





WALDO RETAIL LOCATION FOR LEASE

7420 Wornall Road, Kansas City, Missouri

7420 Wornall Road Kansas City, MO 64114	1 mi radius	3 mi radius	5 mi radius
Population			
2023 Estimated Population	13,938	96,027	244,361
2028 Projected Population	13,414	92,973	239,705
2020 Census Population	15,031	97,170	242,153
2010 Census Population	14,628	94,006	232,725
Projected Annual Growth 2023 to 2028	-0.8%	-0.6%	-0.4%
Historical Annual Growth 2010 to 2023	-0.4%	0.2%	0.4%
2023 Median Age	37.9	39.9	39.7
Households			
2023 Estimated Households	6,939	41,654	113,226
2028 Projected Households	6,571	39,830	110,182
2020 Census Households	7,353	42,396	112,238
2010 Census Households	7,065	41,084	107,366
Projected Annual Growth 2023 to 2028	-1.1%	-0.9%	-0.5%
Historical Annual Growth 2010 to 2023	-0.1%	0.1%	0.4%
Race and Ethnicity			
2023 Estimated White	83.0%	67.2%	65.8%
2023 Estimated Black or African American	8.9%	23.9%	22.5%
2023 Estimated Asian or Pacific Islander	1.9%	3.0%	3.4%
2023 Estimated American Indian or Native Alaskan	0.2%	0.2%	0.3%
2023 Estimated Other Races	6.1%	5.6%	8.0%
2023 Estimated Hispanic	5.5%	4.7%	7.9%
Income			
2023 Estimated Average Household Income	\$150,931	\$159,906	\$125,440
2023 Estimated Median Household Income	\$110,359	\$108,545	\$90,639
2023 Estimated Per Capita Income	\$75,185	\$69,489	\$58,269
Education (Age 25+)			
2023 Estimated Elementary (Grade Level 0 to 8)	0.3%	1.3%	1.7%
2023 Estimated Some High School (Grade Level 9 to 11)	1.4%	3.5%	3.5%
2023 Estimated High School Graduate	12.0%	15.8%	17.8%
2023 Estimated Some College	14.5%	16.7%	18.0%
2023 Estimated Associates Degree Only	5.3%	5.3%	5.9%
2023 Estimated Bachelors Degree Only	38.7%	32.5%	31.2%
2023 Estimated Graduate Degree	27.7%	24.9%	21.9%
Business			
2023 Estimated Total Businesses	889	4,256	11,804
2023 Estimated Total Employees	6,023	37,854	131,610
2023 Estimated Employee Population per Business	6.8	8.9	11.1
2023 Estimated Residential Population per Business	15.7	22.6	20.7

©2024, Sites USA, Chandler, Arizona, 480-491-1112 Demographic Source: Applied Geographic Solutions 11/2023, TIGER Geography - RS1

